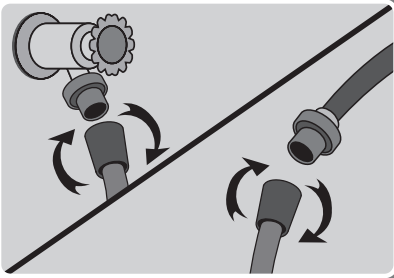
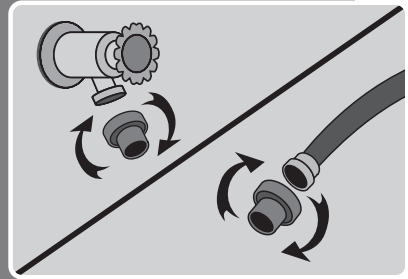


SPIGOT QUICK START GUIDE

STEP 1

In a clockwise direction, hand tighten outdoor spigot adapter to spigot or garden hose until firmly attached.

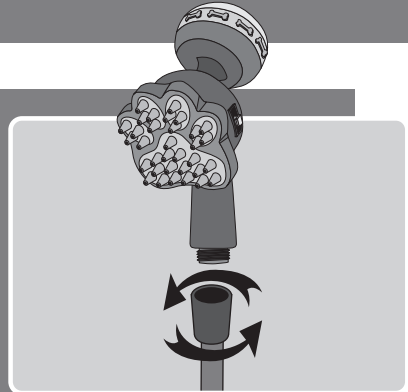


STEP 2

Attach hose to outdoor spigot adapter.

STEP 3

Attach Shampoooch to hose. Enjoy!



For use with automatic compensating valves rated at 1.35 GPM (5.11 L/min) or less.

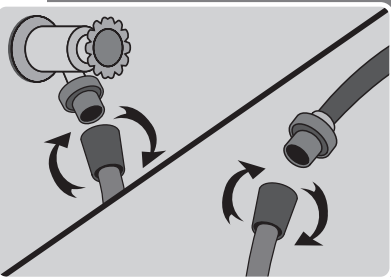
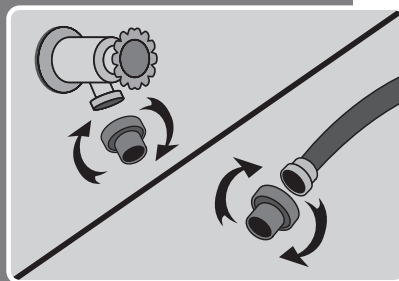


Powered by oxygenics®

ESPIGA GUÍA DE INICIO RÁPIDO

PASO 1

En el sentido de las agujas del reloj, apriete a mano el adaptador de espiga exterior a la manguera de espiga o jardín hasta que esté firmemente sujeto.

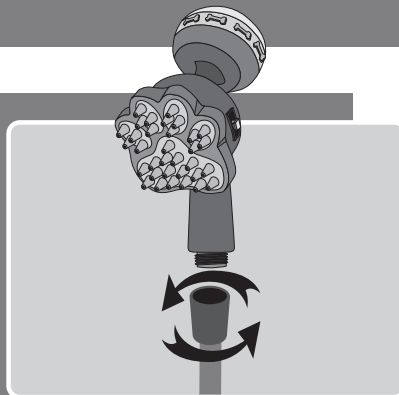


PASO 2

Conecte la manguera al adaptador de espiga exterior.

PASO 3

Conecte la lavadora Shampooch a la manguera. ¡Disfrutar!



Para el uso con válvulas de compensación automáticas nominal de 1.35 GPM (5.11 L/min) o menos.