

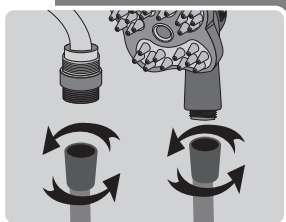
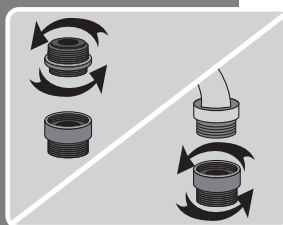


SINK QUICK START GUIDE

FOR MALE THREADED FAUCETS:

STEP 1

Remove smaller end of sink adapter by turning in a counterclockwise direction. Hand tighten larger end of sink adapter in a clockwise direction until firmly attached to the faucet neck.



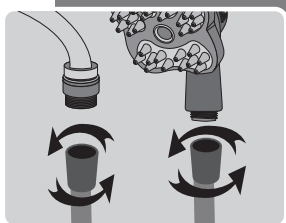
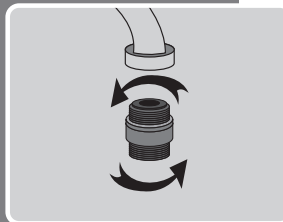
STEP 2

Attach hose to sink adapter. Attach ShampoochPro to hose. Hand tighten only. Enjoy!

FOR FEMALE THREADED FAUCETS:

STEP 1

Hand tighten sink adapter in a clockwise direction until firmly attached to the faucet neck.



STEP 2

Attach hose to sink adapter. Attach ShampoochPro to hose. Hand tighten only. Enjoy!

For use with automatic compensating valves rated at 1.35 GPM (5.11 L/min) or less.



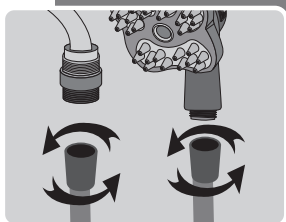
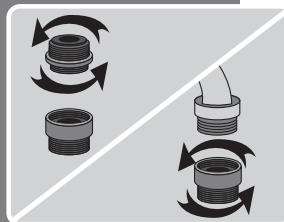
Powered by oxygenics®

LAVABO GUÍA DE INICIO RÁPIDO

PARA GRIFOS CON ROSCA MACHO:

PASO 1

Retire el extremo más pequeño del adaptador del fregadero girándolo en sentido antihorario. Apriete a mano el extremo más grande del adaptador del fregadero en el sentido de las agujas del reloj hasta que esté firmemente sujeto al cuello del grifo.



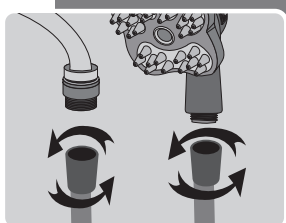
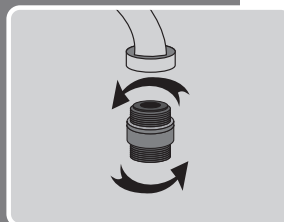
PASO 2

Conecte la manguera al adaptador del fregadero. Coloque la lavadora ShampooochPro a la manguera. Apriete solo a mano. ¡Disfrutar!

PARA GRIFOS ROSCADOS HEMBRA:

PASO 1

Apriete a mano en sentido horario hasta que esté firmemente sujeto hasta el cuello del grifo.



PASO 2

Conecte la manguera al adaptador del fregadero. Coloque la lavadora ShampooochPro a la manguera. Apriete solo a mano. ¡Disfrutar!

Para el uso con válvulas de compensación automáticas nominal de 1.35 GPM (5.11 L/min) o menos.