

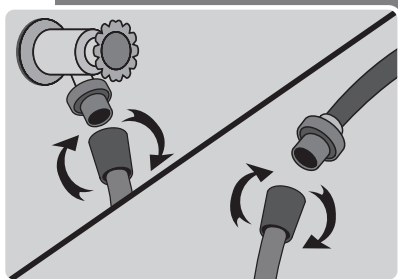
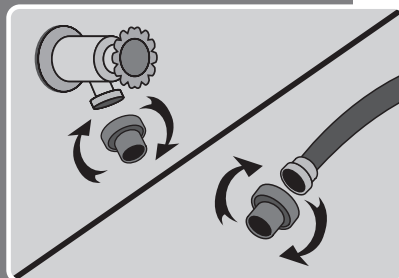


Powered by oxygenics®

# SPIGOT QUICK START GUIDE

## STEP 1

In a clockwise direction, hand tighten outdoor spigot adapter to spigot or garden hose until firmly attached.

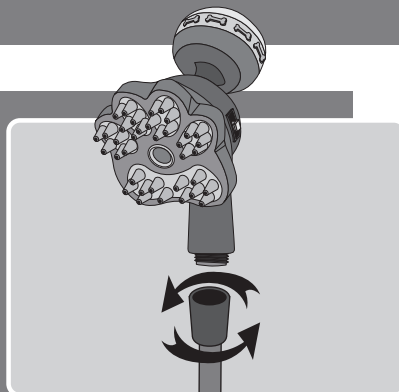


## STEP 2

Attach hose to outdoor spigot adapter.

## STEP 3

Attach ShampoochPro to hose. Enjoy!



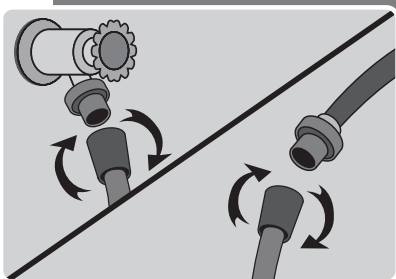
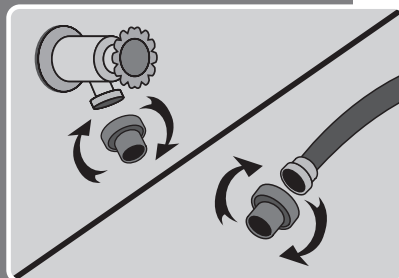
For use with automatic compensating valves rated at 1.35 GPM (5.11 L/min) or less.



# ESPIGA GUÍA DE INICIO RÁPIDO

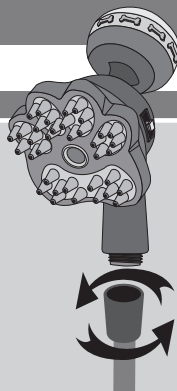
## PASO 1

En el sentido de las agujas del reloj, apriete a mano el adaptador de espiga exterior a la manguera de espiga o jardín hasta que esté firmemente sujeto.



## PASO 2

Conecte la manguera al adaptador de espiga exterior.



## PASO 3

Conecte la lavadora ShampoochPro a la manguera. ¡Disfrutar!

Para el uso con válvulas de compensación automáticas nominal de 1.35 GPM (5.11 L/min) o menos.