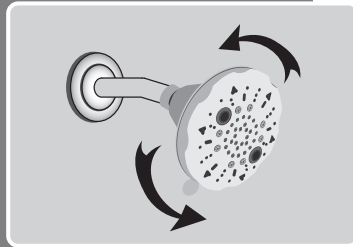


SHOWER QUICK START GUIDE

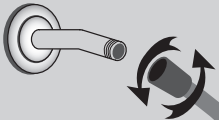
STEP 1

Remove your existing shower head. To remove, turn the existing shower head in a counterclockwise direction.



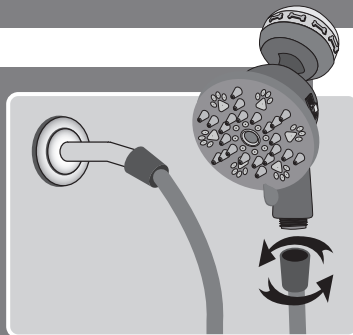
STEP 2

Attach end of hose to shower arm and hand tighten.



STEP 3

Attach PetJetPro to other end of hose and hand tighten. Enjoy!



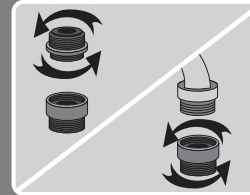
For use with automatic compensating valves rated at 1.35 GPM (5.11 L/min) or less.

SINK QUICK START GUIDE

FOR MALE THREADED FAUCETS:

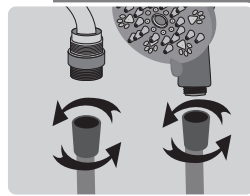
STEP 1

Remove smaller end of sink adapter by turning in a counterclockwise direction. Hand tighten larger end of sink adapter in a clockwise direction until firmly attached to the faucet neck.



STEP 2

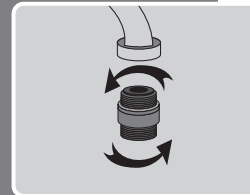
Attach hose to sink adapter. Attach PetJetPro to hose. Hand tighten only. Enjoy!



FOR FEMALE THREADED FAUCETS:

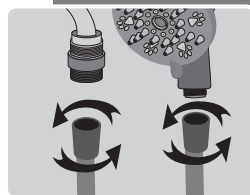
STEP 1

Hand tighten sink adapter in a clockwise direction until firmly attached to the faucet neck.



STEP 2

Attach hose to sink adapter. Attach PetJetPro to hose. Hand tighten only. Enjoy!

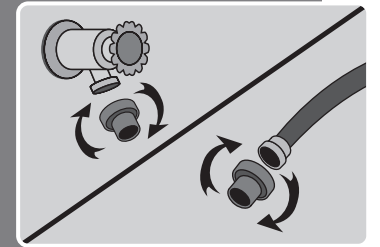


For use with automatic compensating valves rated at 1.35 GPM (5.11 L/min) or less.

SPIGOT QUICK START GUIDE

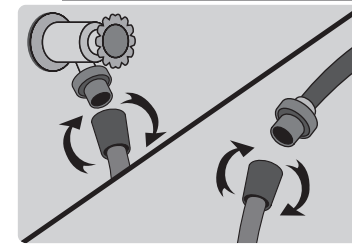
STEP 1

In a clockwise direction, hand tighten outdoor spigot adapter to spigot or garden hose until firmly attached.



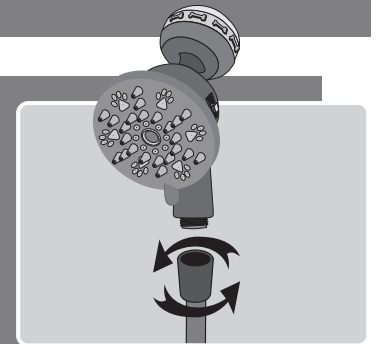
STEP 2

Attach hose to outdoor spigot adapter.



STEP 3

Attach PetJetPro to hose. Enjoy!

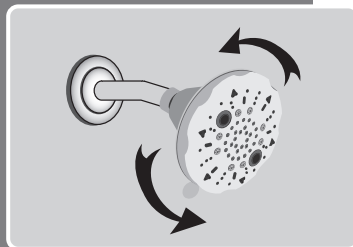


For use with automatic compensating valves rated at 1.35 GPM (5.11 L/min) or less.

DUCHA GUÍA DE INICIO RÁPIDO

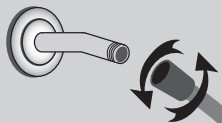
PASO 1

Quite su cabezal de ducha existente. Para la extracción, gire el cabezal de ducha existente en el sentido contrario a las agujas del reloj.



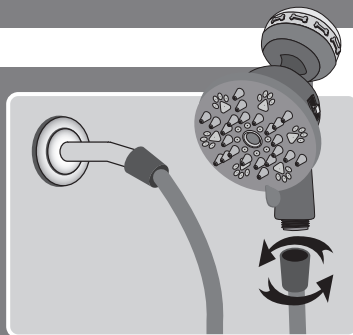
PASO 2

Fije el extremo de la manguera al brazo de la ducha y ajuste a mano.



PASO 3

Fije el extremo de la manguera a la lavadora PetJetPro y ajuste a mano. ¡Disfrutar!



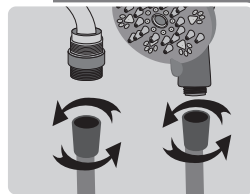
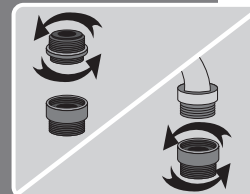
Para el uso con válvulas de compensación automáticas nominal de 1.35 GPM (5.11 L/min) o menos.

LAVABO GUÍA DE INICIO RÁPIDO

PARA GRIFOS CON ROSCA MACHO:

PASO 1

Retire el extremo más pequeño del adaptador del fregadero girándolo en sentido antihorario. Apriete a mano el extremo más grande del adaptador del fregadero en el sentido de las agujas del reloj hasta que esté firmemente sujeto al cuello del grifo.



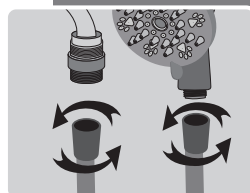
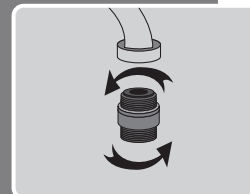
PASO 2

Conecte la manguera al adaptador del fregadero. Coloque la lavadora PetJetPro a la manguera. Apriete solo a mano. ¡Disfrutar!

PARA GRIFOS ROSCADOS HEMBRA:

PASO 1

Apriete a mano en sentido horario hasta que esté firmemente sujeto hasta el cuello del grifo.



PASO 2

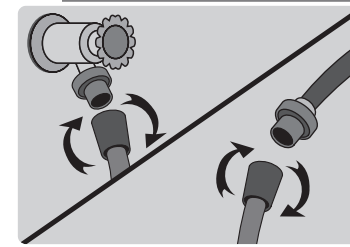
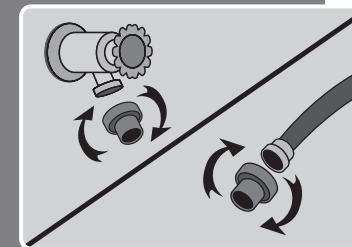
Conecte la manguera al adaptador del fregadero. Coloque la lavadora PetJetPro a la manguera. Apriete solo a mano. ¡Disfrutar!

Para el uso con válvulas de compensación automáticas nominal de 1.35 GPM (5.11 L/min) o menos.

ESPIGA GUÍA DE INICIO RÁPIDO

PASO 1

En el sentido de las agujas del reloj, apriete a mano el adaptador de espiga exterior a la manguera de espiga o jardín hasta que esté firmemente sujeto.

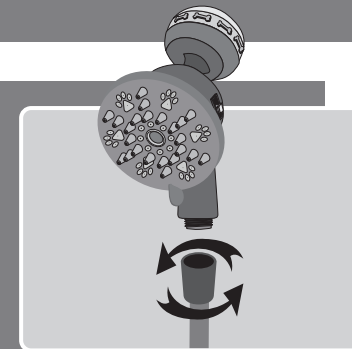


PASO 2

Conecte la manguera al adaptador de espiga exterior.

PASO 3

Conecte la lavadora PetJetPro a la manguera. ¡Disfrutar!



Para el uso con válvulas de compensación automáticas nominal de 1.35 GPM (5.11 L/min) o menos.